

# BUTLERCOLLEGE

October 2016

Josephine Butler  
College  
University of Durham  
South Road  
Durham  
DH1 3DF

T 0191 3347260  
F 0191 3347259

[www.durham.ac.uk/  
butler.college](http://www.durham.ac.uk/butler.college)



*Our planned new annex which will increase the size of our study facilities*

## NEWSLETTER

### All Change! Principal's report

As we welcome our new freshers to Josephine Butler College, we are starting to plan for some exciting new changes to the College. We are celebrating our 10th anniversary across this academic year and, in those ten years, we have taken on some very big challenges which have enhanced the College. For example, we developed a full collegiate programme for the Pre-session English Language students (who had previously missed out on that important wider student experience element of the University's distinctive educational offer). This has recently been praised as a crucial element in the success of their programme by external inspectors, it adds considerably to the international perspective of the College and helps maintain summer activity for our Middle Common Room.

We are now taking on two projects of similar size. On p.2 there are some details of ambitious plans to build a new annex to develop study and library space. We're in the final phase of fundraising and intend that the build will be complete for the start of next academic year.

In addition, from the start of 2017/18, Butler will be growing and, later, getting new neighbours. On p.3 there are outline plans, and there has been a clear commitment from University Council for additional resource on the site to support these changes. While the growth brings challenges, it also brings opportunities as some of our smaller societies become more sustainable, we will be able to house all of our pre-session students and we

are hoping to have more sustainable numbers of returners and postgraduates in residence.

Of course, these big changes don't diminish some of the other enhancements which have taken place in the college. In the past 12 months, we have repurposed some space to develop our own music room (so we no longer share music space with Ustinov College) and we have created a new seminar space with new audio-visual and presentation equipment.

We are looking forward to this coming year with great enthusiasm. The 10th anniversary year will include opportunities for celebration with our students, staff, alumni and friends. In the immediate future is a Boat Party on the Thames for our alumni and later in the year there will be a service in Durham Cathedral to recognise our achievements in those ten years (details on p.3).

Early in the year, the College is due to have its quinquennial review. This involves senior representatives of the University as well as external experts exploring the student experience in Butler, meeting members of staff, undergraduate and postgraduate student leaders, mentors and members of the senior common room, as well as a wider selection of students.

I am confident that they'll find a college which not only provides an existing outstanding student experience, but takes on the challenges it faces to enhance them still further.

Adrian Simpson  
The Principal.



## New plans for study space

The College is embarking on an ambitious new fundraising project to develop our study and library space. Following approval from our Trust Board, College Council and the University, we have agreement to build an annex at the back of our existing bar.

We commissioned GSS Architecture (the firm who originally designed the College buildings) to create an addition to the main social building which complements the existing space and will provide four large rooms and add 120 sq. m. to the existing build.

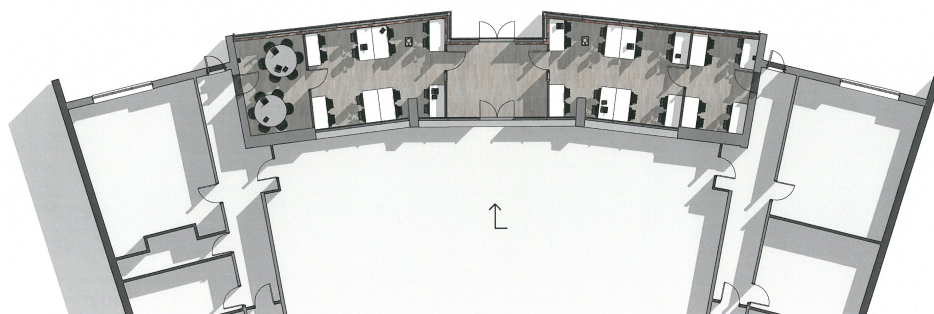
Following extensive consultation with the student representatives, it was clear that there was a need for study space and an environment which lies between formal study locations such as the computer room

and informal social space such as the bar and common rooms. The new build will allow us to do this as well as allowing us to reconfigure common room and office space.

An artist's impression of the build is on the front page and a possible floor plan shown below. Those plans have already had generous funding from the University, the student body and individual donations via our Trust Board.

We are now seeking the final £25,000 to bring the plans to fruition with the aim of opening the new annex for the start of the 2017 academic year. Any donations will be greatly valued and can be given at:

<https://www.dunelm.org.uk/donations/colleges/josephinebutler>



## Art and Scholarship

In addition to all the sports clubs, societies, charitable fundraising and volunteering, Butler prides itself on the extent to which students can engage in wider scholarship.

Students have the opportunity to attend seminars. Postgraduates can present their ideas at 'scholar's suppers' or mix with other postgraduates at the Hill Colleges East Research Forum (which Butler hosted in the summer). Our students run the Butler Scholarly Journal which hosts articles online and produces a high quality physical print version annually.

In addition, Butler hosts leading international academics on a 'fellowship' basis for the Institute for Advanced Study and academic departments.

In the coming year, we will be hosting three fellows. Bajinder Kumar is a leading researcher exploring the development of more environmentally friendly chemical processes, in particular the more efficient creation of biofuels from agro-waste.

Elay Shech is a philosopher who explores the theoretical models of physics,

particularly in how quantum effects are represented and how those representations may affect our reasoning.

Anna Maria Stagno researches the 'landscape of rights': she mixes history, archaeology, geography and law to understand the concept of 'common lands'.

In addition to these research fellows, we will be hosting an Artist-in-Residence. Rachel Hugget is a visual artist who focusses on sculpture, with a particular interest in natural and organic forms.

Rachel will be working with our burgeoning Arts Development Group and will have the support of its founder, Alan O'Cain, who was our Artist-in-Residence in 2015/16. Alan will continue to have a link to the College. In addition to his successful installation (*The Bikini Line*) in the Botanic Garden at the end of last year, Alan has been working over the summer with our pre-sessionals students. This has culminated in an installation as part of the 30th anniversary celebrations of Durham as a World Heritage Site, which will incorporate contributions from many of these students.

## College Staff

### College Officers

#### Adrian Simpson. The Principal.

Adrian has overall responsibility for the College and its strategy. In addition to leading the College, he is Professor in Mathematics Education and teaches in both the Education and Mathematics Departments.

#### Karen Langdon. Vice Principal.

As Vice Principal, Karen leads the student support team and helps to develop the distinctive educational and social experience which Butler offers. She also works with the Business School with a particular interest in developing entrepreneurship.

**Des O'Neill. Bursar.** Des manages the operations, financial and logistical side of the College. He ensures that the facilities are in place to support all of the activity of the College. With a background in quantity surveying, he also works more widely for Durham's colleges in supporting their operations.

#### Pam Burdis. College Secretary.

Pam provides support for The Principal and College Officers and heads the administrative staff.

### Student Support

The student support team provides members of the College with advice and guidance. They can provide support for wellbeing, liaise with specialist support units and academic departments.

**Andrew Tinkler. Chaplain.** Andrew provides support for students of any faith (or none), signposting to different faith groups and works with student groups to develop charitable and volunteering opportunities.

#### Postgraduate and Pre-sessional.

We currently have a vacancy for the role which supports our students on postgraduate programmes and for those on the English for Academic Purposes course in the summer. The postholder also helps to develop the wider scholarly programme.

#### Sandra MacDonald.

**Undergraduate.** Sandra works full time during term time to provide guidance and advice for our undergraduates and can support them in liaising with departments and specialist support units.

## Student Support

**Deborah Norman and Julie Barrett. Student Support Secretary.** Deborah and Julie deliver the administration for the student team and is often the first port of call for students with queries.

**Judith Vincent and Natasha Miller. Administrative Assistant.** Judith and Natasha provide support across the college administration.

**Resident Tutors: Sam Horlor and others** The resident tutors provide out of hours support for students in case of emergency or distress.

**Sally Crawford. Alumni Assistant.** Sally supports the JCR and supports the College in keeping contact with alumni.

## Operations

**Richard Gwalchmai. Operations Manager.** Richard leads the operations team on a day to day basis, ensuring the safety and smooth running of the buildings and facilities.

**Pete Carson. Assistant Operations Managers.** Pete supports Richard, particularly in managing the porter team.

**Mandy Herron. Bar and Catering Services Manager.** As well as managing the bar, kitchen and coffee shop, Mandy liaises with university catering to provide for formals and other meals

**Kate Cummings. Finance Assistant.** Kate is the person to see about bills and payment and provides support for the bursar in monitoring our budget.

**Fiona Bell. Receptionist.** Fiona is the person who can point people in the right direction if they are unsure who to talk to.

**Porters:** Bob Ball, Fred Douthwaite, Les Cooper, Brian Sugden, Dave Henderson, Kevin Bell and Neil Stoker(recycling).

**Housekeeping:** Jean Farrell (Supervisor), Julie Curry and Claire Milburn (Team Leaders). Claire Barker, Katie Brzostowska, Wendy Dowdle, Linda Elliott, Valerie Forster, Anne Fox, Karen Hockaday, Agnes Batog, Natalie Punshon, Jade Fowler, Rita Higham, Evelyn Clarke, Karen Dobson

## Alumni News

We intend to mark this year's 10th Anniversary with plenty of opportunities for our alumni to get involved and celebrate together. For example, on 22nd October, Butler will be hosting a Boat Party on the Thames. This will leave Tower Pier and sail up towards the O2 past the Tower of London, London Bridge, Cutty Sark and the Royal Observatory. The event will bring together more than 200 current students and staff, as well as alumni and friends of the college. In addition to the Boat Party the weekend will include an Alumni Football match and an informal networking event.

Alumni will also be invited to attend a Cathedral Service on the 18th February 2017, during the Durham Reunion between the 17th and 19th February. The Service will celebrate all Butler has achieved over its first ten years. On the evening of the 18th there will be an Alumni Formal. More information on the Reunion weekend, Cathedral Service and Formal will be released soon. To round the year off, there will be an extended 'Butler Day' (with events on both the Saturday and Sunday) and finally our first residential weekend for alumni on 22nd and 23rd July 2017 targeted at the first five years of graduates.

We look forward to seeing as many alumni as possible at the upcoming events to help us celebrate this special year in the college's history!

It is very easy for our alumni to stay in contact with what is going on with Facebook

<https://www.facebook.com/groups/7852787225/>

Twitter: @butler\_alumni

or our own alumni website :

<http://community.dur.ac.uk/butler/jcr/alumni>

Sally Crawford (Alumni Relations Assistant)

## Trust Board Funding the student experience.

A Trust Board, with members of the College community as well as external, independent members oversees our fundraising and expenditure strategies. Compared to older, more established colleges, Butler has much smaller resources to draw upon, but the extra funding we receive from donors is very welcome and can make all the difference to the student experience. It raises money to support both short term requests and to develop a longer term fund for larger projects (including, for example, the building of a tennis court). In particular, at the moment, the Board is allocating some of the money raised to the new annex build detailed on p2.

In 2015/16 our income from parent and alumni donations was £1908. In addition, we received other income from the sale of merchandise and gift aid, much of which was allocated to the build project. However, the board was eager to ensure that its regular functions were not affected and it received a wide variety of bids over the year. It committed £2225 for projects including lockers to enable students living out of college to leave belongings securely, photography equipment, tennis club nets, a 'library' of cooking equipment for the college Pudding Society and new music stands for the Music Society. The Board has also established hardship funds to ensure that members of the College can access sports and other parts of the student experience, which will be available from this coming academic year.

If you wish to give to the Josephine Butler College Trust Fund, you can do so online at:

<https://www.dunelm.org.uk/donations/colleges/josephinebutler>

The Trust Board is there to ensure that every donation is used for the best possible advantage of the student experience, now and in the future.



## The Growth of Butler

Josephine Butler College has rapidly developed into one of the most popular colleges in the University, with one of the highest rates of applications per place. It is clear that the unique mix of high quality accommodation, excellent student experience and the wide range of opportunities to get involved in societies, sports, scholarly activity and volunteering is attractive to a wide range of applicants and this is reflected in the excellent balance of students from all backgrounds who make up the Butler student body.

In this context, Butler has the opportunity to grow and enable more students to have the advantage of the Butler experience. While the details are still to be worked out, University Council has approved the main proposals that from 2017-18, Butler College's residential stock will grow by around 40%. It is expected that extra staffing and physical resource will accompany this which, in addition to the extra study space which should come from the annex project detailed on p2, will ensure that all our students continue to have the best possible experience.

The expansion of Butler is part of a sequence of plans approved by University Council. These involve transferring

Ustinov College from the Howlands site, where it shares many of the facilities with Butler; temporarily locating John Snow and George Stephenson Colleges from Queen's Campus to the vacated buildings and then moving one of those colleges to a newly built facility.

The planned timetable is:

2017/18: Ustinov College occupies part of Howlands accommodation and all of Sheraton Park and Josephine Butler expands its bed numbers at Howlands.

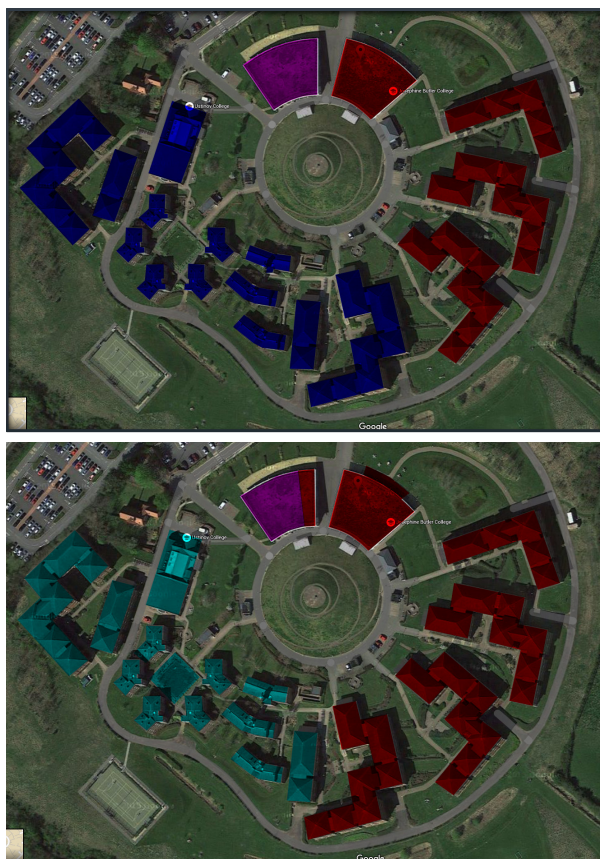
2018/19: Ustinov College operates solely from Sheraton Park. John Snow and George Stephenson move from Queen's Campus to Durham City to set up on the Howlands site with Josephine Butler.

2019/20: The intention is that the Mount Oswald site opens as new college accommodation. Either John Snow or Stephenson leaves Howlands for Mount Oswald. The final location of both colleges will be determined following student consultation.

University Council tasked the University Executive to ensure that the JCRs, MCRs and GCR at Ustinov, Josephine Butler, John Snow, and Stephenson are involved in the transition

planning required to make the

proposal a success, which will include an appropriate amount of new investment.



*Top: Butler (in red) in 2016 alongside Ustinov*

*Bottom: Butler in 2019 alongside a new neighbour*

## Congratulations Vice-chancellor's Scholarships

We offer our sincere congratulations to students at Josephine Butler College who are receiving awards of vice chancellor's scholarships for academic excellence. These are based on the recommendation of heads of department and pro-vice-chancellors on the basis of performance in previous year's assessments and examinations. This year's scholars from Butler are:

Millie Hawes  
Joseph Darlington  
Charlotte Aston  
Thaddeus Kenny  
Thomas Broadbent

Awards in other areas of excellence are for incoming students and we are delighted that Emily Choy Winters has been awarded a Vice-Chancellor's scholarship for music.

In addition, many of our students have been successfully nominated for awards which recognise their contributions to college and university. The Ian Graham award for significant all-round contribution to life in the University went to Sudhan Raja.

In addition, Thorp Scholarships were awarded to

Jordan Mariotto-Wood  
Matthew Ricketts  
Amy Robson  
Amavir Singh-Bal  
Rebecca Winkle